

# Shell



**Roel Nicolai**  
Principal Geodesist  
Shell International Exploration & Production

Delft, 17<sup>th</sup> April 2007

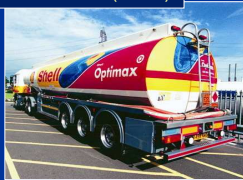


## Royal Dutch / Shell Group

Unconventionals  
(tar sands)



Oil Products (Retail)



Exploration and Production

330 Geomatics staff (incl on-site contractors)



Renewables



Corporate services to  
all sectors, e.g. HSE  
consultancy



Gas & Power



Chemicals



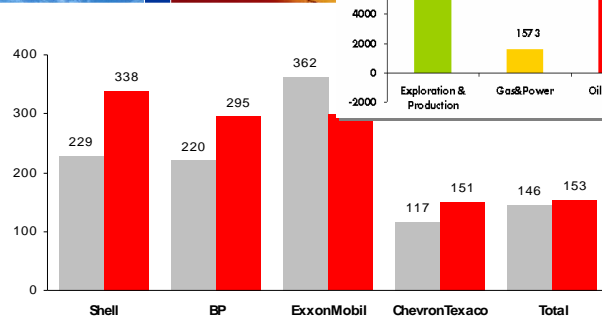
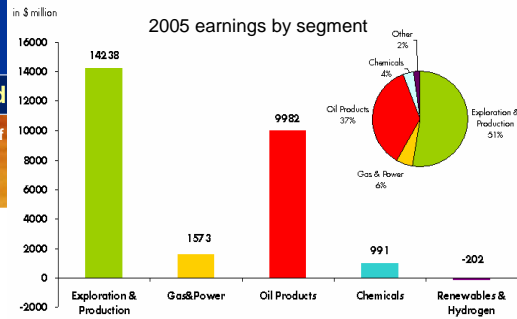
Other Business Activities

# Royal Dutch / Shell Group



Exploration and  
330 Geomatics staff

Oil Products (Retail)



Corporate services to all sectors, e.g. HSE consultancy

Source: Total Revenue: Royal Dutch/Shell Group of Companies Annual Report on Form 20-F/A (Amendment No. 1) 2004  
Market Capitalisation: Bloomberg, 2005

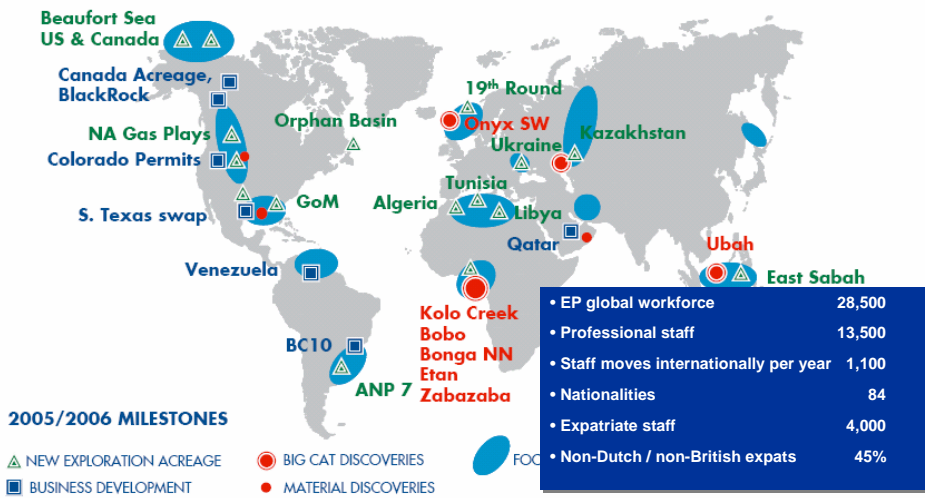
Gas & Power

Chemicals

Source: [www.shell.com](http://www.shell.com) -- Investor Centre

## Exploration and Production focus

EXPLORATION AVERAGING > 1 BILLION BOE/YEAR



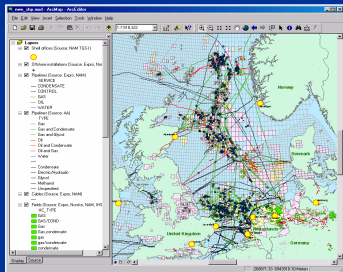
Source: [www.shell.com](http://www.shell.com) -- Investor Centre

## Geomatics activities



### Survey Operations

- Positioning for drilling rigs, seismic vessels etc
- Hydrographic surveying
- Land surveying
- Geodetic Control
- Metocean (meteorology & oceanography)
- Aerial photography and mapping



### Geo-Information Management

- GIS analysis
- Data management
- Cartography
- Geodetic data integrity
- Remote Sensing

5

## What is it like to work in Shell ... a personal view



- International exposure, team spirit (global team)
- Cultural diversity
- Geomatics covers the width of the EP business
- Challenging environment
- People empowerment and reward culture
- Personal development seen as very important
- Many career opportunities
- Most stay in discipline

But ...



- Seen as service providers (to geologists, engineers, etc)
- Small discipline – easily overlooked
- If Geomatics do their job well, they tend to be perceived as redundant
- Mega company with a mania for reorganisation
- Poor industry reputation (however undeserved !)

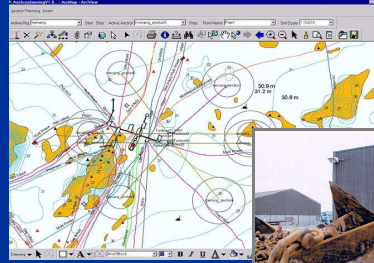
6



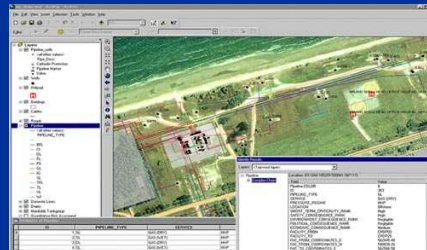
### Position 3: Project surveyor for offshore operations, Shell EP Europe

- Planning and execution of offshore surveys
  - drilling rig positioning
  - seismic operations
  - pipeline maintenance
- Contractor liaison
- Contract management
- Location: Aberdeen or Assen, but not offshore
- key aspects:
  - operational pressure
  - spatial data integrity

Positioning of drilling rigs offshore



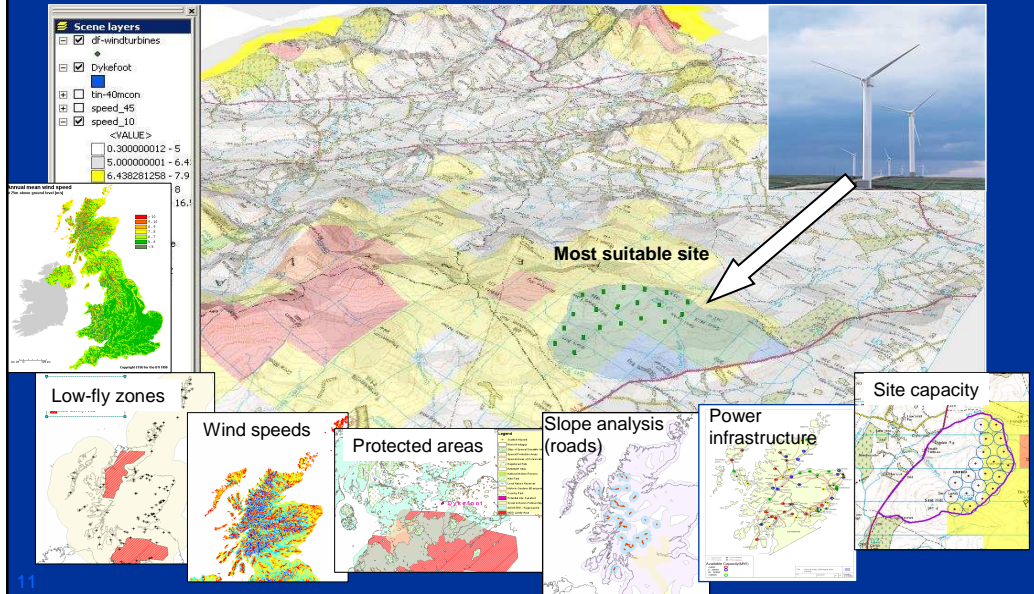
Pipeline maintenance



**Thank you!**

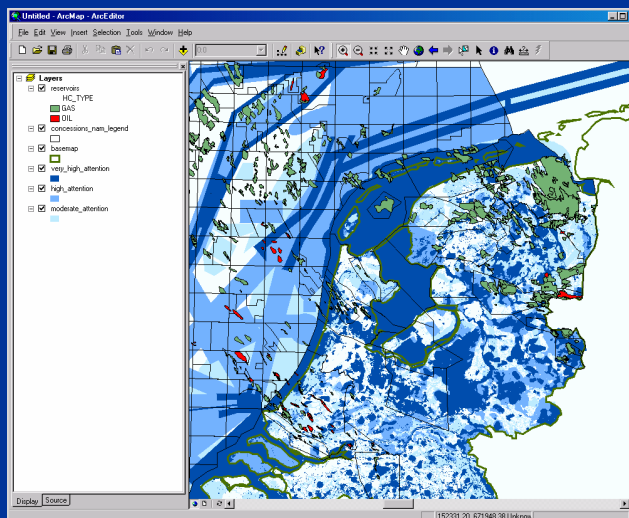


## GIS analysis: Wind Energy



## GIS for national debate: economy vs environment

Shell sensitivity map created from 100's of sources: Eye opener in Dutch parliament



Difficulty to obtain drilling permit

