

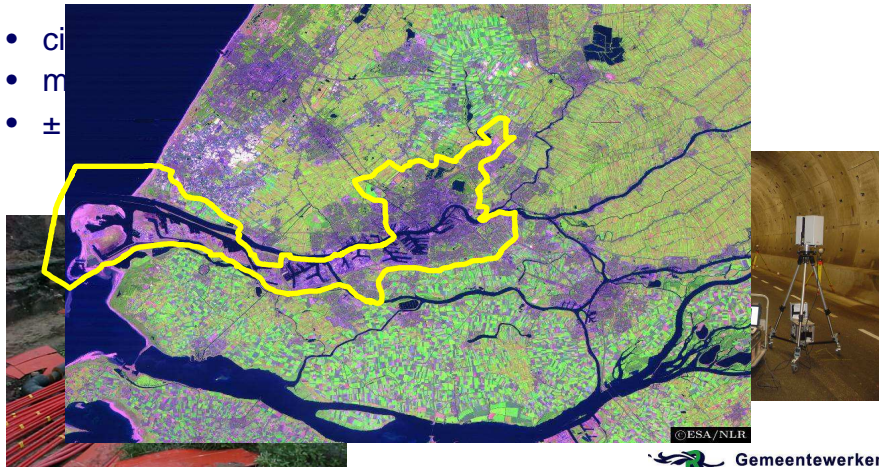
## Rotterdam Public Works Service

- civil engineering for Rotterdam city and harbor
- maintenance of the public area
- ± 2000 employees



## Rotterdam Public Works Service

- ci
- m
- ±

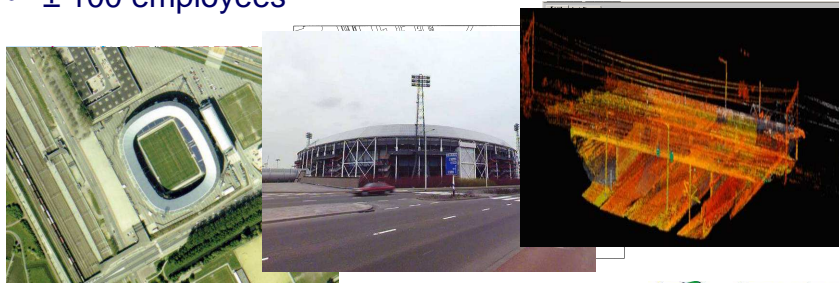


Gemeentewerken  
Gemeente Rotterdam



## Surveying and GIS department

- maintenance of geographic base registrations
- acquisition, management and distribution of geodata
- surveying services (± 2000 projects/year)
- ± 100 employees



Gemeentewerken  
Gemeente Rotterdam



## Research and Development

- object orientation – linking map to city management data
- continuous deformation monitoring
- terrestrial laserscanning
- 3D citymodels

